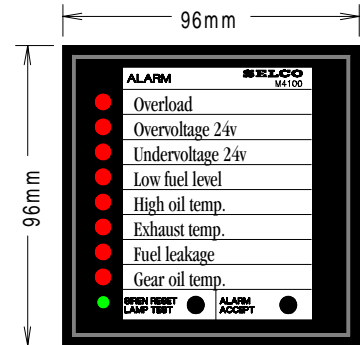
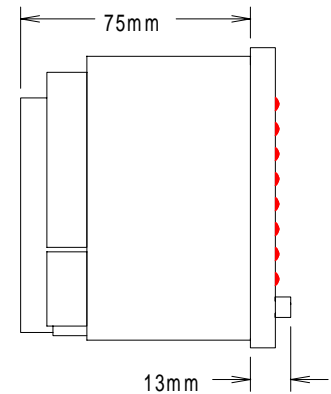


# 8 Channel Alarm Annunciator



Cutout 92 x 92mm



- ★ Compact unit for flush mounting.
- ★ 8 input contacts normally open or normally closed.
- ★ Time delays 50ms - 15secs individually selectable on all channels.
- ★ One common output relay for siren and two programmable output relays for alarms with voltage free contacts.

- ★ LED colour change by plug-in system.
- ★ Plug-in terminal block for easy service.
- ★ Two integrated push buttons for siren reset/ lamp test and alarm accept.
- ★ DC or AC supply voltage.
- ★ Remote individual selectable blocking with adjustable unblocking delay 1-15secs.
- ★ External dimming possibilities.

## Application

The M4100 provides a cost effective solution, where a number of input channels are to be surveyed. The 8 inputs will accept any combination of normally open (NO) or normally closed (NC) contacts. The inputs will activate the common siren relay and each input can be programmed to control one (or both) of the two alarm relays for group alarm outputs. The delays for the inputs can be individually selected between 50ms and 15secs.

## Function

The inputs will flash the corresponding LED's, deenergise the siren relay and if input jumper is in enable position, the alarm relays are activated.

After pushing the SIREN RESET button, the siren relay is energised for silencing the siren. It is now possible to push the ALARM ACCEPT button and the LED's go on steady light and are maintained on light as long as the input signals are present.

Alarm annunciation according to DIN 19235		
	Pulse input	Constant input
Input	—	—
LED	— — — —	— — — —
Siren relay	—	—
Alarm relay 1 enable	—	—
Alarm relay 2 enable	—	—
Siren reset	-	-
Alarm accept	-	-

### Label

The front frame is released and the label between the front plates can be typed on a typewriter or on a printer. For the convenience of typing, the label can be taped on a sheet of paper.

### Programming

Under the rear cover and under the front plate are jumpers for programming (see drawings).

Jumpers in the lower row on the rear side determine the reference for each channel. Jumpers in lower position will select 0V as reference and jumpers in upper position will select the supply voltage (+12V or +24V) as reference.

Jumpers in the upper row determine whether the inputs are normally open (NO) or normally closed (NC). If 0V is used as reference, jumpers in the upper position will give NO and jumpers in the lower position will give NC. If the supply voltage is used as reference, jumpers in the upper position will give NC and jumpers in the lower position will give NO.

The time delays for each channel can be adjusted individually between 50ms and 15secs. A separate jumper decides in its upper position that alarm relay 1 is normally deenergized (ND) or in its lower position that the relay is normally energized (NE).

Under the front plate the upper row of 8 jumpers will, when removed, disable the functioning of alarm relay 2 for the corresponding channels. The middle row of 8 jumpers will, when removed, disable the functioning of alarm relay 1 for the corresponding channels. The lower row of 8 jumpers will, when removed, disable the blocking function for the corresponding channels.

On the potentiometers the delays 1-15secs for unblocking are adjustable. A separate jumper decides in its left position that alarm relay 2 is normally deenergized (ND) or in its right position that the relay is normally energized (NE).

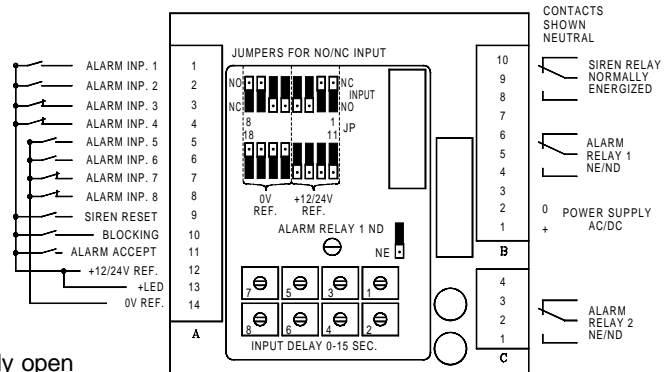
### Dimming (option)

Dimming is possible with an optional adjustable dimming unit M4100-99. For installation fasten the unit in a 10mm hole near the annunciator, disconnect jumper between 12 and 13 and connect the red wire to 12, the blue wire to 13 and the black wire to 14.

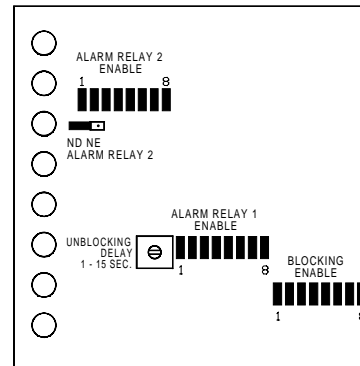
### Specifications

Consumption	: 0.15A
Voltage range	: ± 30%
Temperature range	: -20 +70°C./ -4 to 158°F
Minimum input delay	: 50m sec.
Dimensions	: 96x96x75mm/3.78x3.78x2.95"
Cutout	: 92 x 92mm / 3.62 x 3.62"
Weight	: 0.250kg / 0.55Lb
Contact rating	: AC : 380V, 5A, 1250VA. DC : 150V, 5A, 120W
EMC	: CE according to EN50081-1, EN50082-1, EN50081-2, EN50082-2

### ALARM ANNUNCIATOR M4100



NO = normally open, NC = normally closed  
NE = normally energized, ND = normally deenergized  
■ = jumper



UNDER FRONT PLATE

Protection : IP20

### Type Selection Table

Type	Supply	Special functions
M4100-12	12V DC/AC	
M4100-20	24V DC/AC	
M4100-22	24V DC/AC	additional alarm relay
M4100-30	24V DC/AC	channels 6-7 & 8: yellow LED's and indication only
M4100-31	24V DC/AC	channels 1-2-3-4: green LED's and indication only, channels 5-6-7-8: yellow LED's
M4100-33	24V DC/AC	input delay 0-30 sec.

Other combinations are available on request.

### Accessories

M4100-99	Optional external dimming unit
M0846-00	Front cover with handle (IP54)
M0846-01	Front cover with key (IP54)

2508 Lakebrook Court  
Atlanta, GA 30360-1715  
Telephone: (770) 455-9110 / 1-877-735-2687  
Telefax: (770) 457-3754  
Web: www.SELCOUSA.com