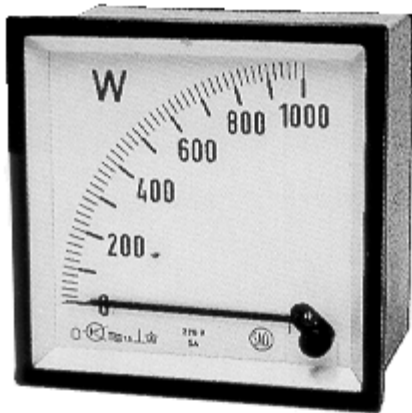


# Watt Meter



| <i>Part #</i> | <i>Dim.</i>           |
|---------------|-----------------------|
| <b>96W</b>    | 96mm Sq. / 3.78" Sq.  |
| <b>144W</b>   | 144mm Sq. / 5.67" Sq. |

The part number must be followed by the range. .

Part# Example: 96WIIIn

## **SPECIFICATIONS:**

Input: Direct, CT or via PT

Voltage Range:  $\pm 15\%$

Currange Range: 20-120%

Accuracy 1.5%

Cutout Dim:

96W 92mm +0.8mm / 3.622" +0.032"

144W 138mm +1.0mm / 5.433" +0.039"

Approximate Burden per Phase: 1-3.5VA:

| <i>Ad On Part#</i> | <i>Description</i>               | <i>Wiring Diagram</i> |
|--------------------|----------------------------------|-----------------------|
|                    | Single Phase                     | 1                     |
| I                  | Three Phase Balanced             | 2                     |
| In                 | Three Phase Balanced (4 Wire)    | 3                     |
| II                 | Three Phase Un-Balanced          | 4                     |
| IIIn               | Three Phase Un-Balanced (4 Wire) | 5                     |

Add to part# the Watt Range, Voltage, CT ratio and Frequency

**SELCO USA, INC.**

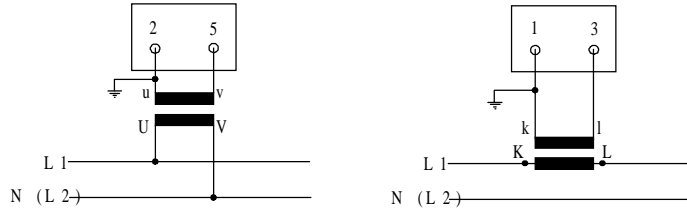
Phone (770) 455-9110 / 1-877-SELCOUS

Fax (770) 457-3754

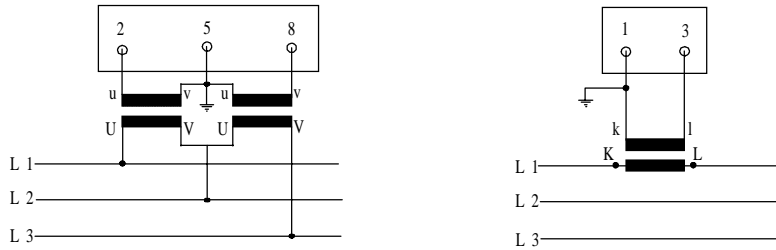
[www.SELCOUSA.com](http://www.SELCOUSA.com)

# Watt Meter

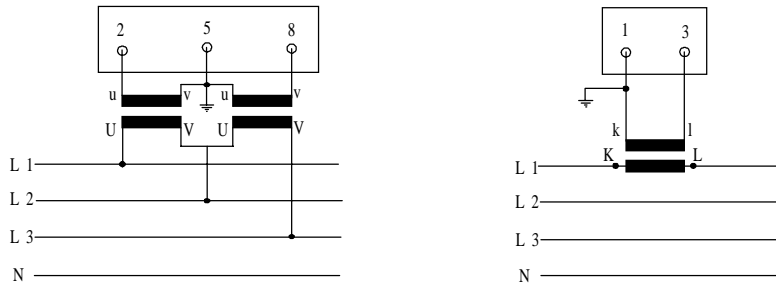
Wiring Diagram 1



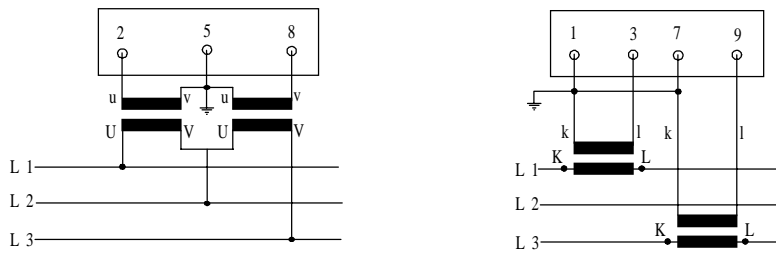
Wiring Diagram 2



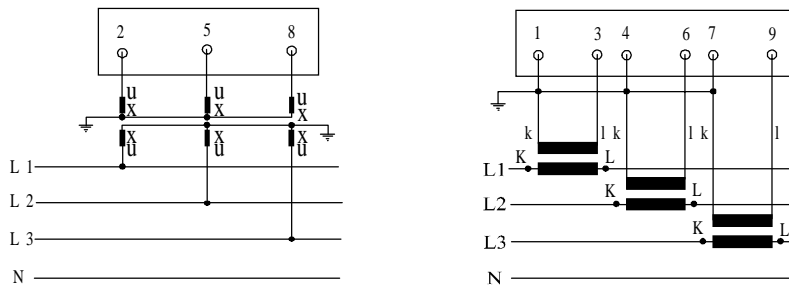
Wiring Diagram 3



Wiring Diagram 4



Wiring Diagram 5



**SELCO USA, INC.**

Phone (770) 455-9110 / 1-877-SELCOUS

Fax (770) 457-3754

[www.SELCOUSA.com](http://www.SELCOUSA.com)