

# VAr Meter



<i>Part #</i>	<i>Dim.</i>
<b>96VA</b>	96mm Sq. / 3.78" Sq.
<b>144VA</b>	144mm Sq. / 5.67" Sq.

The part number must be followed by the range. .

Part# Example: 96VAIIInr

## **SPECIFICATIONS:**

Input: Direct, CT or via PT

Voltage Range:  $\pm 15\%$

Currange Range: 20-120%

Accuracy 1.5%

Cutout Dim:

96VA 92mm +0.8mm / 3.622" +0.032"

144VA 138mm +1.0mm / 5.433" +0.039"

Approximate Burden per Phase: 1-3.5VA:

<i>Ad On Part#</i>	<i>Description</i>	<i>Wiring Diagram</i>
r	Single Phase	1
Ir	Three Phase Balanced	2
Inr	Three Phase Balanced (4 Wire)	3
IIr	Three Phase Un-Balanced	4
IIInr	Three Phase Un-Balanced (4 Wire)	5

Add to part# the Watt Range, Voltage, CT ratio and Frequency

**SELCO USA, INC.**

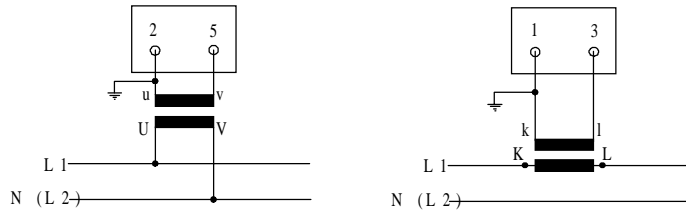
Phone (770) 455-9110 / 1-877-SELCOUS

Fax (770) 457-3754

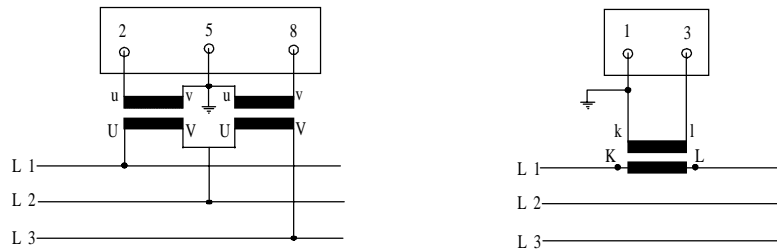
[www.SELCOUSA.com](http://www.SELCOUSA.com)

# VAr Meter

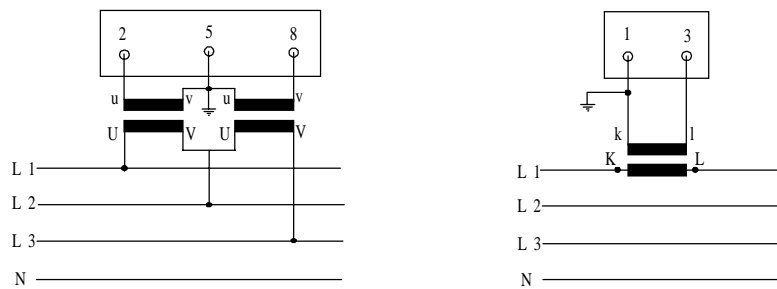
Wiring Diagram 1



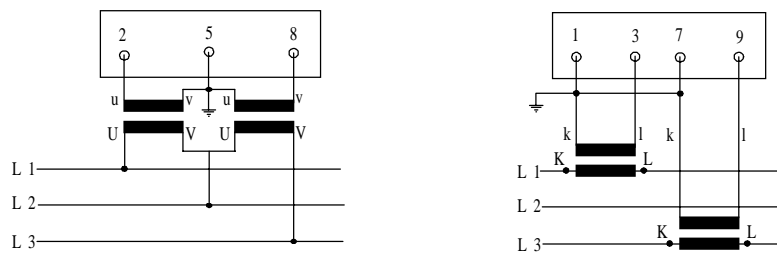
Wiring Diagram 2



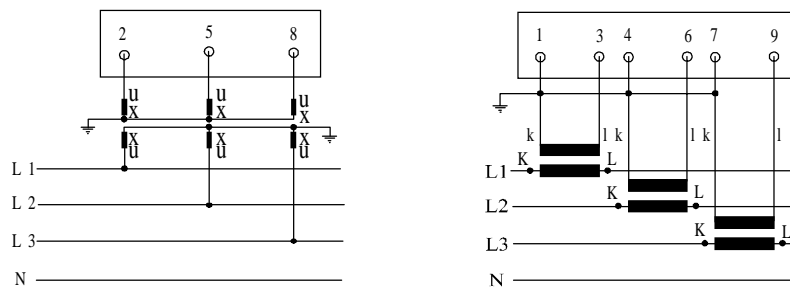
Wiring Diagram 3



Wiring Diagram 4



Wiring Diagram 5



**SELCO USA, INC.**

Phone (770) 455-9110 / 1-877-SELCOUS

Fax (770) 457-3754

[www.SELCOUSA.com](http://www.SELCOUSA.com)