

# COMBINED kW TRANSDUCER & LEVEL CONTROLLER.

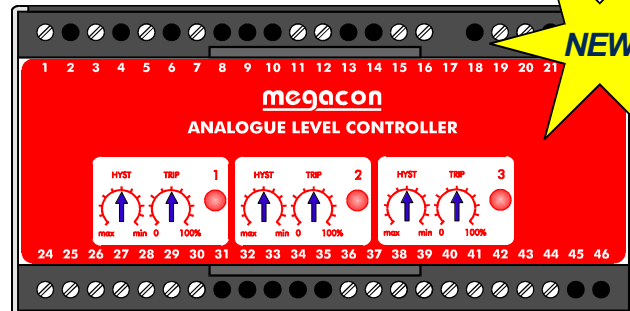
# KCM13/3W4

Active Power – kW. 3 Ph. 4W. Unbalanced Load. – Analogue Output.  
Three Levels of Switching.

## FEATURES

The KCM13/3W4 is a fully self contained "All in One" instrument which combines a 3 Phase. 4 Wire, Unbalanced load power transducer and a three stage level controller.

The unit can be used for many applications including load dependant control of generating sets, load shedding, load blocking etc.



The transducer is a true calorimetric, high stability, active power (watt) measuring converter. The instrument will convert AC power into an industry standard, DC output signal with magnitude and polarity proportional to the level of power in 3 Phase. 4 Wire Unbalanced load systems.

The signal output can be used to drive remote meters, control equipment or used for application in telemetry data systems etc.

The level control section of the instrument comprises three discrete output relays each with a voltage free changeover contact. Each relay has independent adjustment of trip and hysteresis levels. The relays can be individually configured to either energise or de-energise above the set trip levels. A facility is also provided to allow the relays to be latching or self-resetting.

KCM13/3W4 Combined kW Transducer and Level Controllers are assembled into standard Din rail/panel mounting enclosures - IP51 to BS En 60529 and are suitable for use in ambient temperatures between -10 to + 55 °C, at average relative humidities of up to 65%.

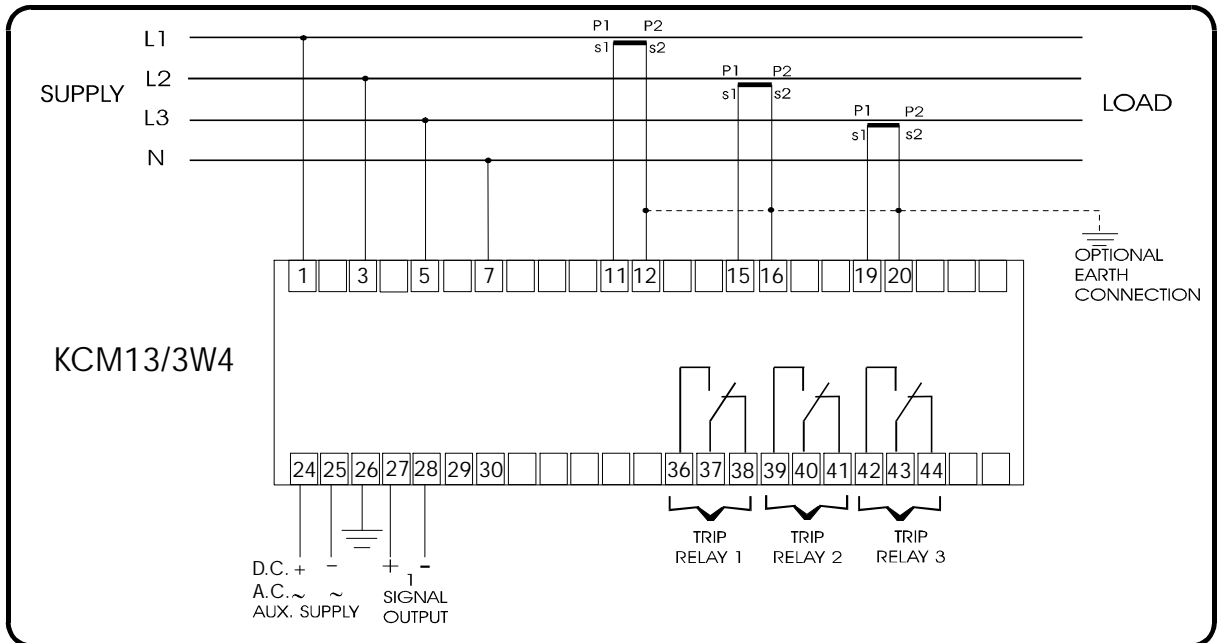
All terminal screws are recessed to prevent finger contact.

## SPECIFICATION

System voltage	:	Standard voltages 100-120, 220-240, 380-440V.AC
System frequency	:	45 – 65Hz.
Voltage tolerance	:	Nominal +/-10%
Auxiliary voltage	:	Standard voltages 85-265V.AC. 100-300V.DC. 18-36V.DC. 36-72V.DC.
Accuracy	:	Class 1. (BS En 60688) at 30% In. to 120% In.
C.T. Input.	:	/1A or /5A. (Class 1 recommended).
Overload capacity	:	2 x rated current continuous. 15 x rated current for 10 seconds.
Output signals.	:	0-1mA. (10V into 500Ω minimum).
Max.output voltage	:	15V.DC. under open circuit conditions.
Output protection	:	Fully protected against open or short circuit output.
Output relay	:	3 off Voltage free C/O contacts. AC rating: 2A.(415V. 800VA). DC. Rating: 250mA. (50W resistive 220V).
Trip level	:	Adjustable 0-100%.
Hysteresis.	:	Adjustable Approx. 5-90%
Max. Consumption	:	4 VA.
E.M.C. compatibility	:	Complies with BS En 50081-2 & BS 50082-2.
Approx. weight	:	1.2kg.

## ORDERING INFORMATION

System voltage.	:	kW range.	:
Auxiliary voltage.	:	Output 1.	:
C.T. ratio.	:		:



NOTE:

1. To ensure correct operation, the instrument must be connected as shown above.
2. Relays shown de-energised.
3. The use of screened cable is recommended for output signal line.
4. The negative of the output signal MUST not be earthed.

