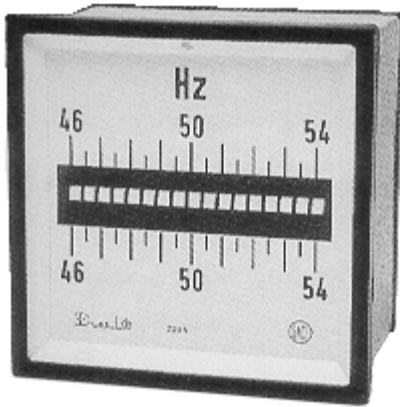


# Frequency Meter



<i>Part #</i>	<i>Dim.</i>
<b>48FR</b>	48mm Sq. / 1.89" Sq.
<b>72FR</b>	72mm Sq. / 2.83" Sq.
<b>96FR</b>	96mm Sq. / 3.78" Sq.
<b>144FR</b>	144mm Sq. / 5.67" Sq.

The part number must be followed by the range.

Part# Example: 96FR 55-65Hz 120V

## SPECIFICATIONS:

Input: Direct or via PT

Voltage Range:  $\pm 15\%$

Accuracy 0.5%

Cutout Dim:

48FR 45mm +0.6mm / 1.772" +0.024"

72FR 68mm +0.7mm / 2.677" +0.028"

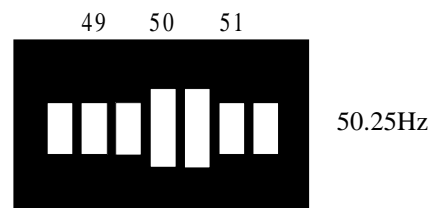
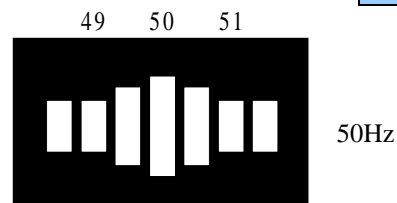
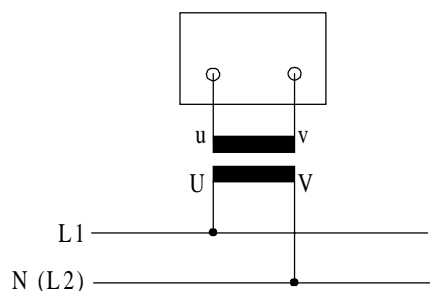
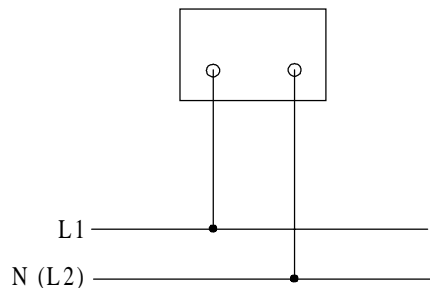
96FR 92mm +0.8mm / 3.622" +0.032"

144FR 138mm +1.0mm / 5.433" +0.039"

Approximate Burden: 1.2 – 2.2VA

<i>Range</i>	<i>No of Reeds</i>	<i>Range</i>
48.5-51.5Hz	7	100V
47-53Hz	13	110V
46-54Hz	17	120V
45-55Hz	21	127V
58.5-61.5Hz	7	208V
57-63Hz	13	220V
56-64Hz	17	380V
55-65Hz	21	415V
		440V

## Wiring Diagram



**SELCO USA, INC.**

Phone (770) 455-9110 / 1-877-SELCOUS

Fax (770) 457-3754

[www.SELCOUSA.com](http://www.SELCOUSA.com)