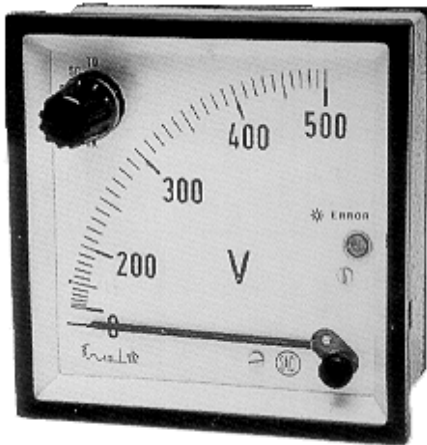


AC Voltmeter / Ammeter with selector switch



SPECIFICATIONS:

Input: Direct or via PT

Scale 90°

Accuracy 1.5%

Frequency Range 15 – 100Hz

Cutout Dim:

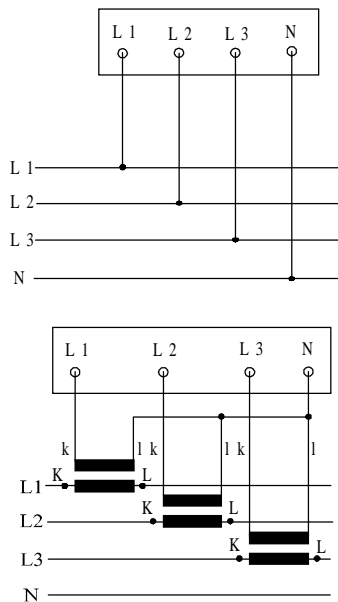
72ACS 68mm +0.7mm / 2.677" +0.028"

96ACS 92mm +0.8mm / 3.622" +0.032"

144ACS 138mm +1.0mm / 5.433" +0.039"

Approximate Consumption in VA: 0.1 – 1

Wiring Diagram



Part #	Dim.
72ACS	72mm Sq. / 2.84" Sq.
96ACS	96mm Sq. / 3.78" Sq.
144ACS	144mm Sq. / 5.67" Sq.

The part number must be followed by the range. Part# Example: 96ACSVP 0-300V

Add on Part #	Dim.
A	Ammeter
V	Voltmeter
VP	Voltmeter with phase sequ.

Range	Range
0-10V	0-10A
0-12V	0-15A
0-15V	0-20A
0-20V	0-25A
0-25V	0-30A
0-30V	0-40A
0-40V	0-50A
0-50V	0-60A
0-60V	0-75A
0-75V	0-80A
0-80V	0-100A
0-300V	0-150A
0-500V	0-250A
	0-300A
	0-400A
	0-500A
	0-600A
	0-750A

SELCO USA, INC.

Phone (770) 455-9110 / 1-877-SELCOUS

Fax (770) 457-3754

www.SELCOUSA.com