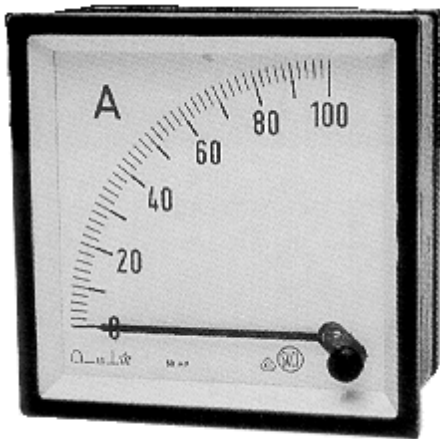


AC Ammeter



SPECIFICATIONS:

Input: Direct or via CT

Scale 90°

Accuracy 1.5%

Frequency Range 15 – 100Hz

Cutout Dim:

48AAC 45mm +0.6mm / 1.772" +0.024"

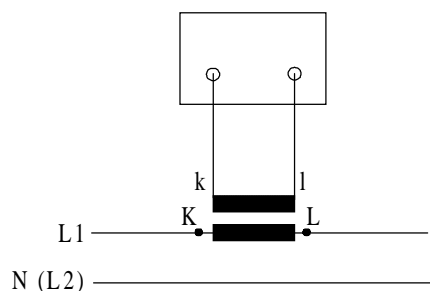
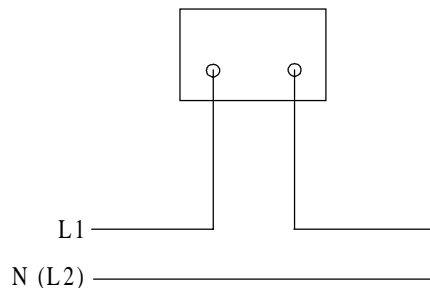
72AAC 68mm +0.7mm / 2.677" +0.028"

96AAC 92mm +0.8mm / 3.622" +0.032"

144AAC 138mm +1.0mm / 5.433" +0.039"

Approximate Consumption in VA: 0.3 – 3VA

Wiring Diagram



<i>Part #</i>	<i>Dim.</i>
48AAC	48mm Sq. / 1.89" Sq.
72AAC	72mm Sq. / 2.83" Sq.
96AAC	96mm Sq. / 3.78" Sq.
144AAC	144mm Sq. / 5.67" Sq.

The part number must be followed by the range.

Part# Example: 96AAC 0-250A

<i>Range</i>
0-6A
0-10A
0-12A
0-15A
0-20A
0-25A
0-30A
0-40A
0-50A
0-60A
0-75A
0-80A
0-100A
0-150A
0-250A
0-300A
0-400A
0-500A
0-600A

SELCO USA, INC.

Phone (770) 455-9110 / 1-877-SELCOUS

Fax (770) 457-3754

www.SELCOUSA.com